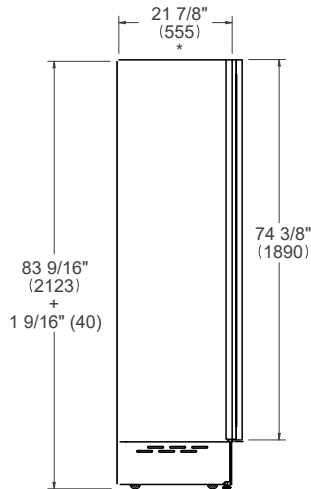
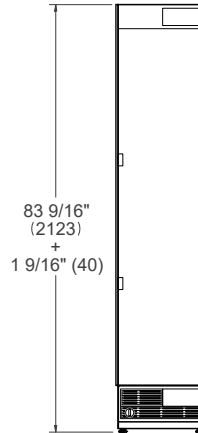


PRODUCT DIMENSIONS

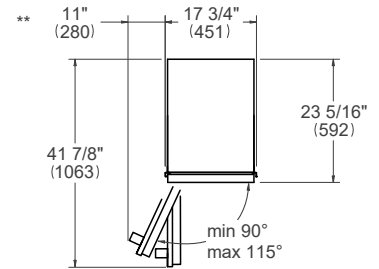
SIDE VIEW



FRONT VIEW



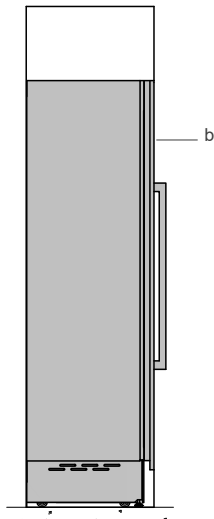
TOP VIEW



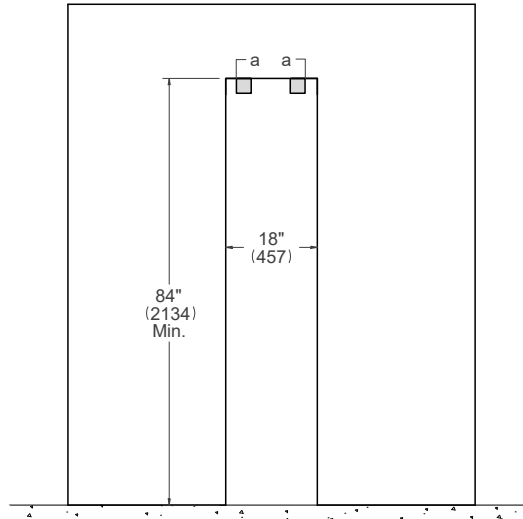
* Depth without door
 ** Maximum Overall Handle Dimension, 3/4" (19) door panel thickness

CUTOUT DIMENSIONS

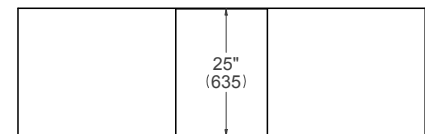
SIDE VIEW



FRONT VIEW



TOP VIEW



For a 25" (635) flush inset depth, max door panel thickness is 15/16" (24). Max door panel weight is 66 lbs (30 kg).

- (a) Anti-tipping brackets – included with appliance
- (b) Panel dimensions available on Door Panel Specs, Built-in Food Preservation Design Guide or Installation Manual

ELECTRICAL & WATER CONNECTION

E

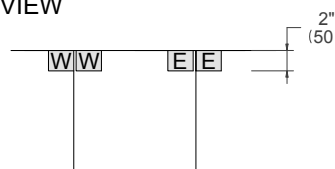
A properly-grounded, horizontally-mounted electrical receptacle should be installed according to this drawing.

W

To connect to the water supply system, use a 1/4" waterline with a minimum length of 60" (1500).

Connection(s) placement within the opening may require additional cabinet depth.

TOP VIEW



FRONT VIEW



INSTALLATION REQUIREMENTS

If the appliance(s) is not connected through the side profile trims to secured cabinetry anti-tip brackets must be installed.